

Roll Anode

Zinc sacrificial anodes for corrosion control
of steel in concrete

Technical Data Sheet

Product application

These sacrificial zinc anodes are specifically designed for application in pre-drilled holes which are imbedded in an ion-conductive auto moistening paste, for cathodic protection of reinforced concrete structures.

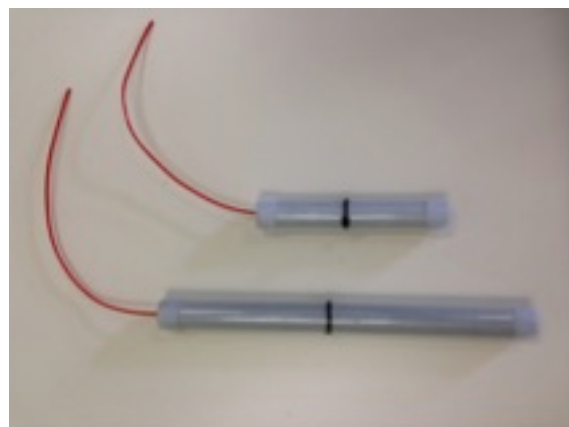
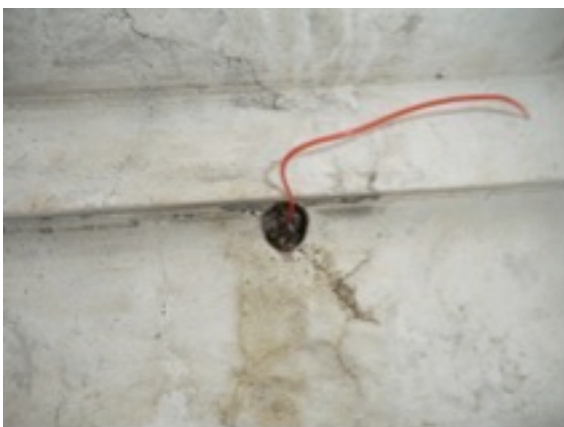
Product description

The Rollanode consists of rolled up layers of zinc with ion-conductive gel which after applied in concrete will be covered with an ion-conductive self-moistening overlay paste keeping the anodes active during their entire service-life. This paste (ZAP = Zinc anode Activation Paste) is delivered separately in 600ml sausages which can be applied with standard manual or battery powered sealant guns. These anodes are utilized in those areas where high expectancy of corrosion is expected. They guarantee a strong reduction of corrosion and preventing new locations with initiation of corrosion.

The service life of the anodes is directly related to the following variables : total zinc weight per unity surface area, steel surface area (steel density), presence and availability of oxidizing agents (O₂, H₂O) to maintain the cathodic reactions on the steel structure, and the anode's capacity.

Thanks to the simplicity and quickness of the installation, application costs can be reduced to a minimum.

The eventual driving force between those anodes and the steel reinforcement guarantees a long and corrosion-free service life of the structure.



Roll Anode

Technical information

ZAP (Zinc anode Activation Paste)		
Sausage	ml	600
Spec. weight	kg/l	1,5
Weight gr.	kg.	1
Stock conditions		< 30°C < 50% RH
Maximum storage time	months	month 12 (original packing)
Packing		Aluminium with plastic liner

Rollanode		
Length	cm	12,5 +/- 1%
Diameter	mm	23mm +/- 5%
Weight	gr.	80
Stock Conditions		< 30°C < 60% RH
Max. storage time	month	12 (original packing)
Packing		Carton box : 20 Rollanodes + 2pc. ZAP sausages
Tarriff nr.		7905 00 00

ICCP design

In line with other CP systems, a CP system based on Rollanodes should be designed by qualified and certified specialists and installed by qualified and experienced contractors. Refer to the international standard ISO12696 "Cathodic protection of steel in concrete".

For further recommendations refer to the General Description and Installation Guidelines.

CorrPRE Engineering BV, Jan Tinbergenstraat 25-9, 2811DZ, Reeuwijk, Netherlands

Revision Nr.
03

Revision date
10th January 2015

Approved
R. Giorgini

All technical data stated in this Technical Data Sheet are based on laboratory tests. Actual measured data may vary due to circumstances beyond our control. The information, and, in particular, the recommendations relating to the application and end-use of CorrPRE's products, are given in good faith based on CorrPRE's current knowledge and experience of the products when properly stored, handled and applied under normal conditions in accordance with CorrPRE's recommendations.